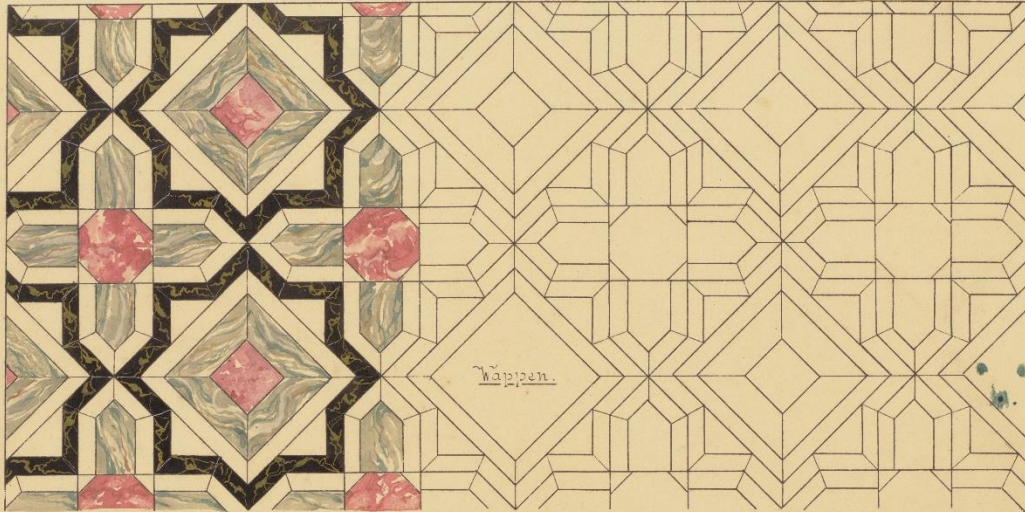


Marmor-Mandala zum Ausmalen

St. Maria degli Angeli. Rom.

Capella Albergati.

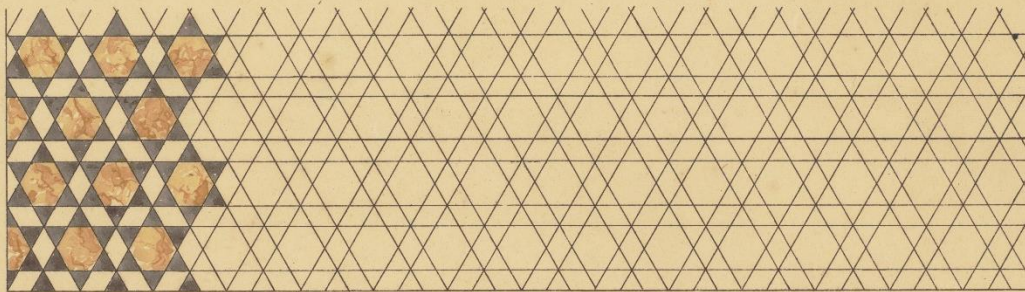


N^o 121.

M: 1:20

S. Martino. Siena.

Boden einer Kapelle.

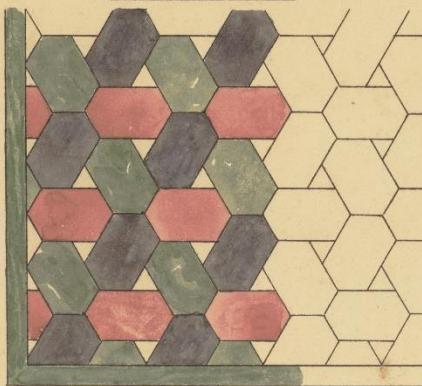


N^o 122.

M: 1:20.

Cerlosa bei Florenz.

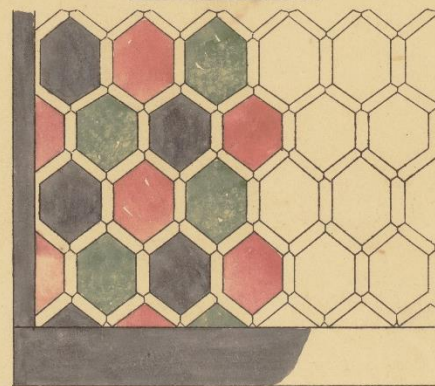
Fussboden der Kirche.



N^o 123.

M: 1:20.

Fussboden des Chors.



N^o 123a.